

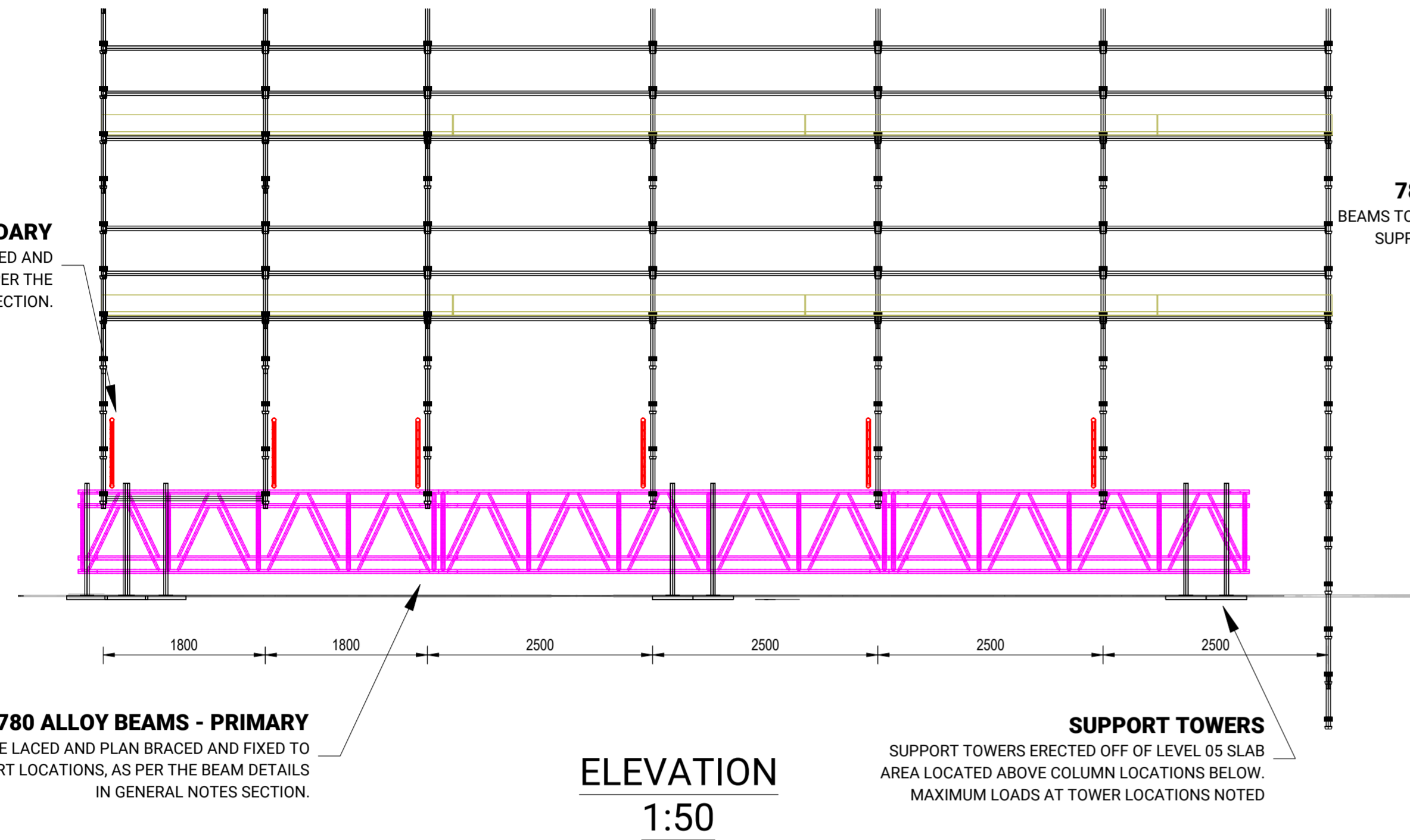
SG:4 HANDRAILS TO INTERMEDIATE LIFTS OMITTED FOR CLARITY

DESIGN BASED RESIDUAL HAZARD

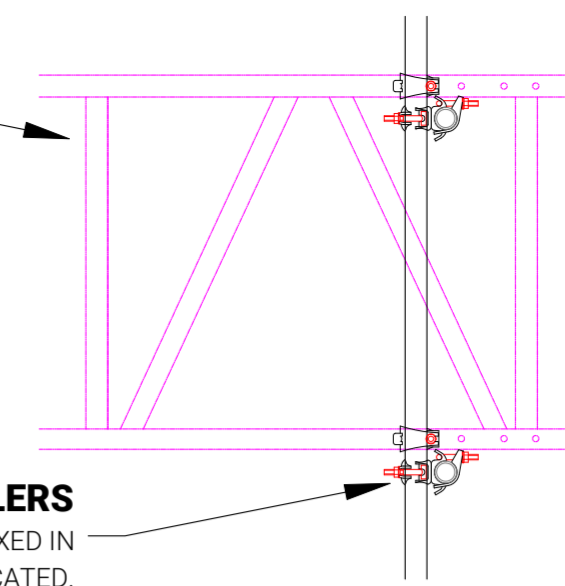
Design Based Hazards are actively eliminated where possible in the Design Process. Where Hazards cannot be eliminated, this symbol on the drawing with attached note means:

1. Design Based Hazards exist within this proposal.
2. Action is required by the person supervising the work to manage the design hazards during construction.

In accordance with Brogan Group Procedures the PERSON SUPERVISING the construction MUST CONTACT the Design office, BEFORE WORK COMMENCES, for CLARIFICATION of the identified hazards.



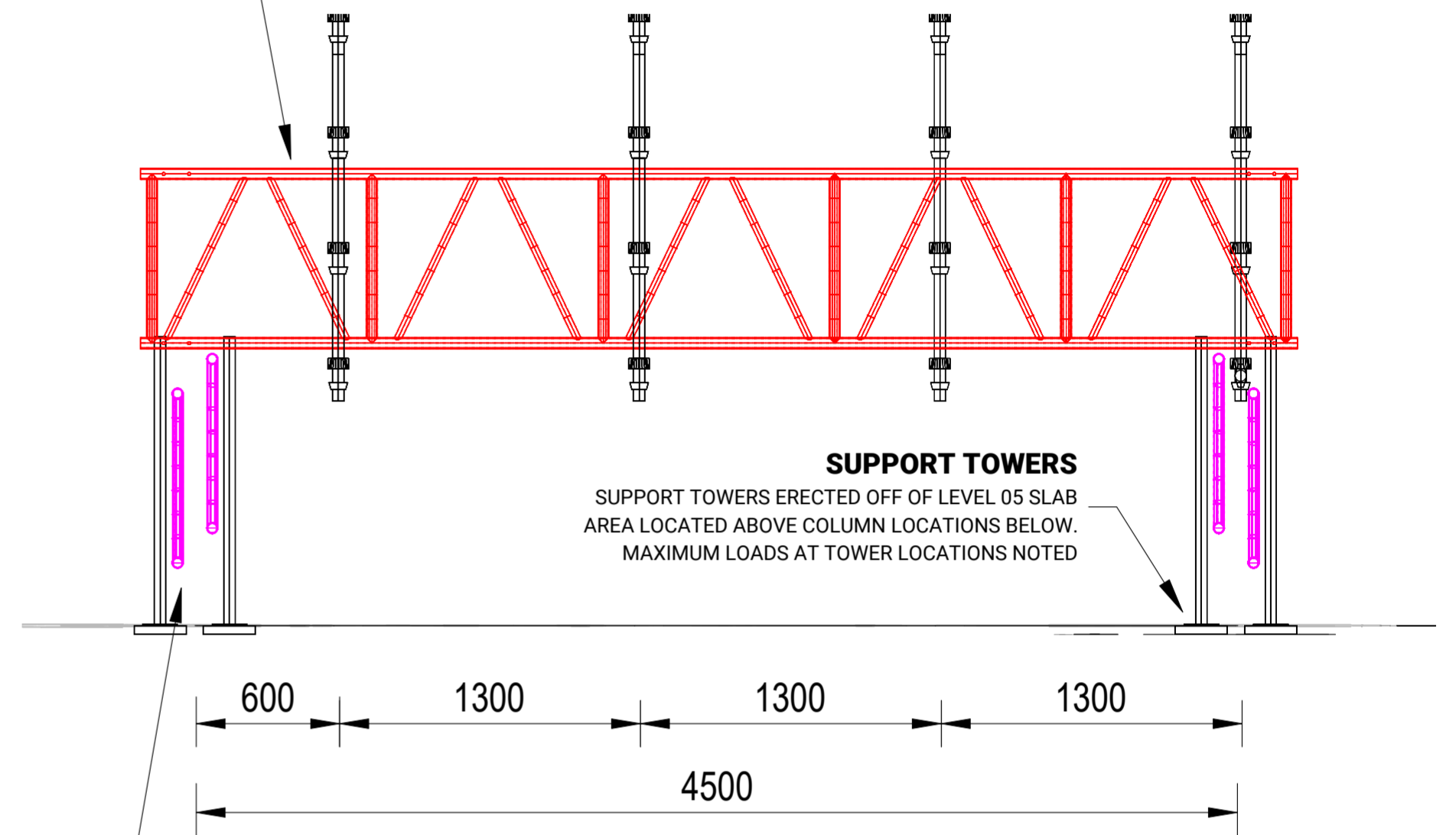
780 ALLOY BEAMS
BEAMS TO BE LACED AND PLAN BRACED AND FIXED TO SUPPORT LOCATIONS, AS PER THE BEAM DETAILS IN GENERAL NOTES SECTION.



SUPPLEMENTARY COUPLERS
ADDITIONAL LOAD BEARING COUPLERS TO BE FIXED IN LOCATIONS INDICATED.

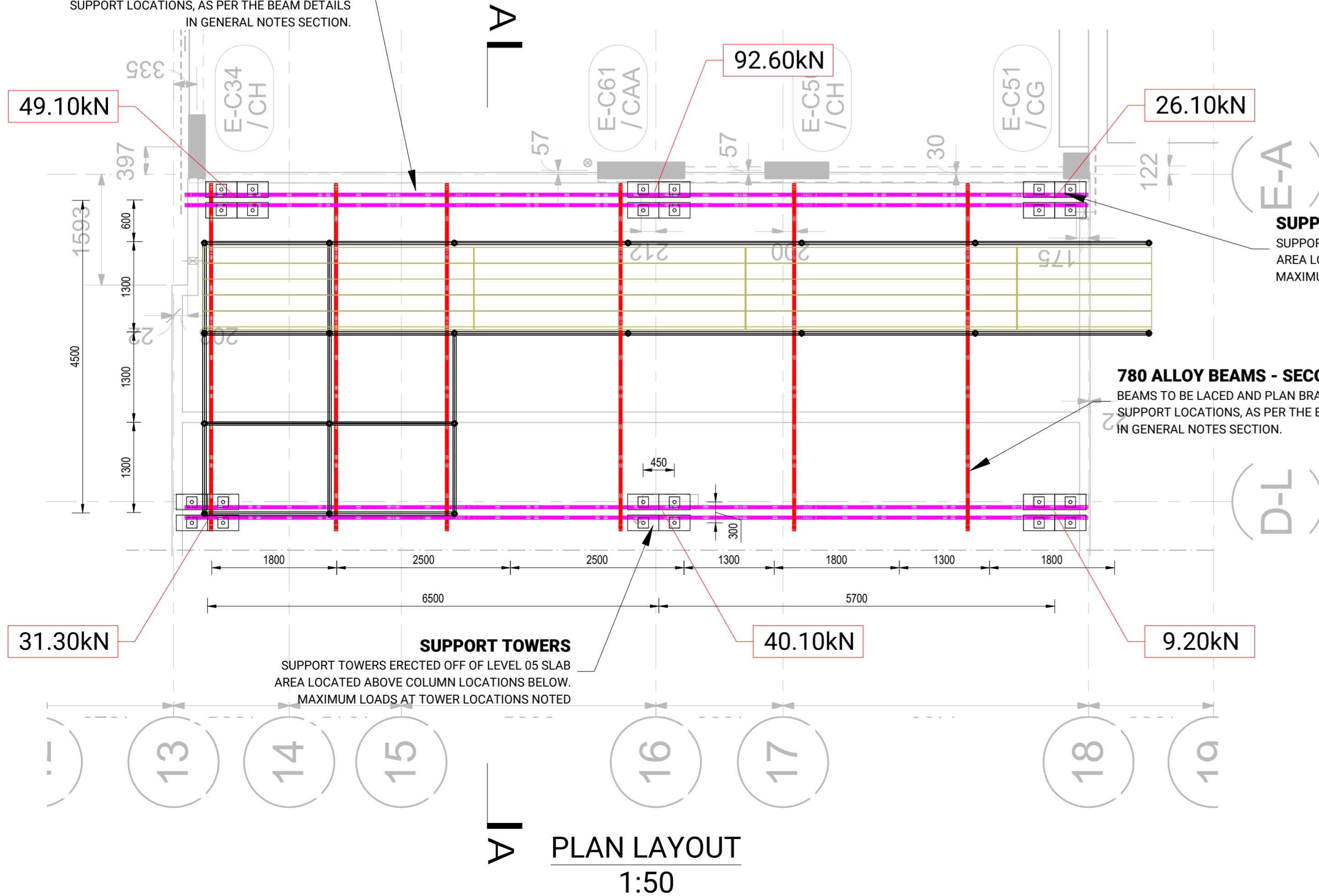
BEAM CONNECTION DETAIL

780 ALLOY BEAMS - SECONDARY
BEAMS TO BE LACED AND PLAN BRACED AND FIXED TO SUPPORT LOCATIONS, AS PER THE BEAM DETAILS IN GENERAL NOTES SECTION.

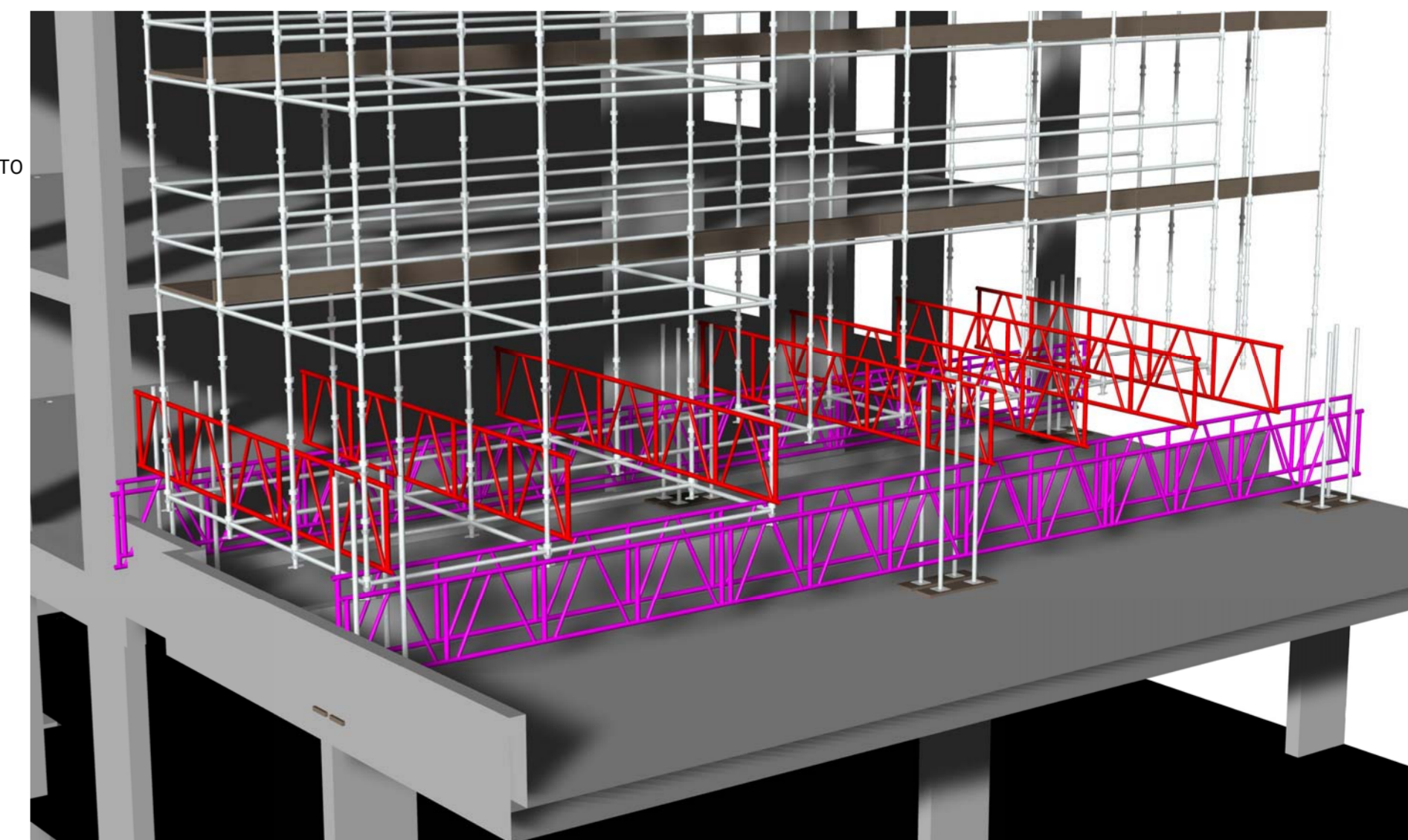


780 ALLOY BEAMS - PRIMARY
BEAMS TO BE LACED AND PLAN BRACED AND FIXED TO SUPPORT LOCATIONS, AS PER THE BEAM DETAILS IN GENERAL NOTES SECTION.

780 ALLOY BEAMS - PRIMARY
BEAMS TO BE LACED AND PLAN BRACED AND FIXED TO SUPPORT LOCATIONS, AS PER THE BEAM DETAILS IN GENERAL NOTES SECTION.



SUPPORT TOWERS
SUPPORT TOWERS ERRECTED OFF OF LEVEL 05 SLAB AREA LOCATED ABOVE COLUMN LOCATIONS BELOW. MAXIMUM LOADS AT TOWER LOCATIONS NOTED



3D DETAIL